



MONTHLY MEMBERSHIP PROGRESS REPORT

District 2 S5

Results as of: 09/30/2018

GMT: GREGORY GILLIAM

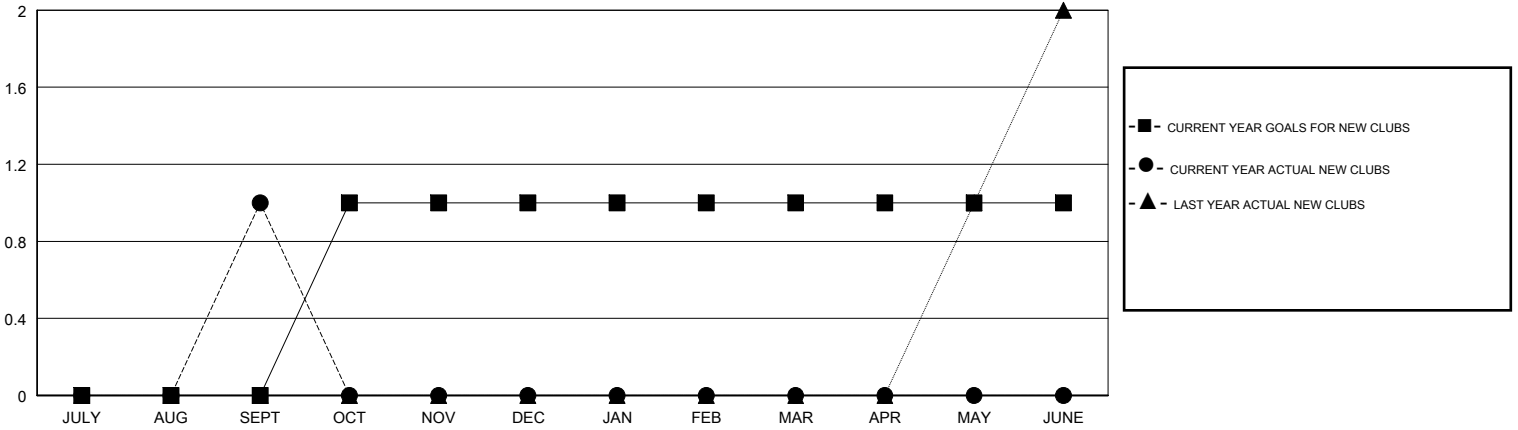
LOCATION TEXAS

GMT CA

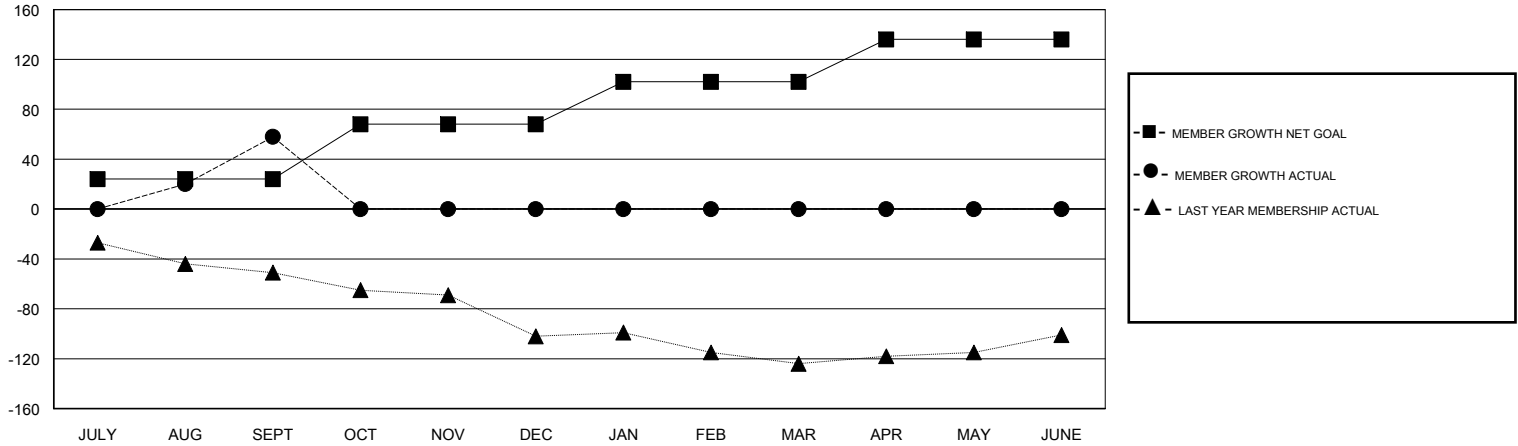
Clubs			
RESULTS FOR 2018-2019			
QUARTER	NEW CLUB GOAL	NEW CLUBS	DROPPED CLUBS
JULY/AUG/SEPT	0	1	0
OCT/NOV/DEC	1	0	0
JAN/FEB/MAR	0	0	0
APR/MAY/JUNE	0	0	0

Members			
RESULTS FOR 2018-2019			
QUARTER	MEMBER GROWTH NET GOAL	MEMBER GROWTH ACTUAL	DROPPED MEMBERS ACTUAL (including transfers)
JULY/AUG/SEPT	24	116	48
OCT/NOV/DEC	44	0	0
JAN/FEB/MAR	34	0	0
APR/MAY/JUNE	34	0	0

GOALS AND ACTUAL NEW CLUBS CUMULATIVE



GOALS AND ACTUAL MEMBERS CUMULATIVE



DROPPED CLUBS: 0	32 CLUBS OF 62 ADDED 1 OR MORE NEW MEMBERS	<u>GENDER DISTRIBUTION</u>	
DROPPED MEMBERS		MALE	1,513 (61.65%)
DECEASED	8	FEMALE	941 (38.35%)
CLUB CANCELLED	0	Women Percentage Fiscal Year Goal: 40%	
OTHER	40	TOTAL FAMILY UNIT MEMBERS	396
TOTAL	48	FAMILY MEMBERS PAYING HALF DUES	200

[CLICK HERE FOR CUMULATIVE MEMBERSHIP DATA](#)